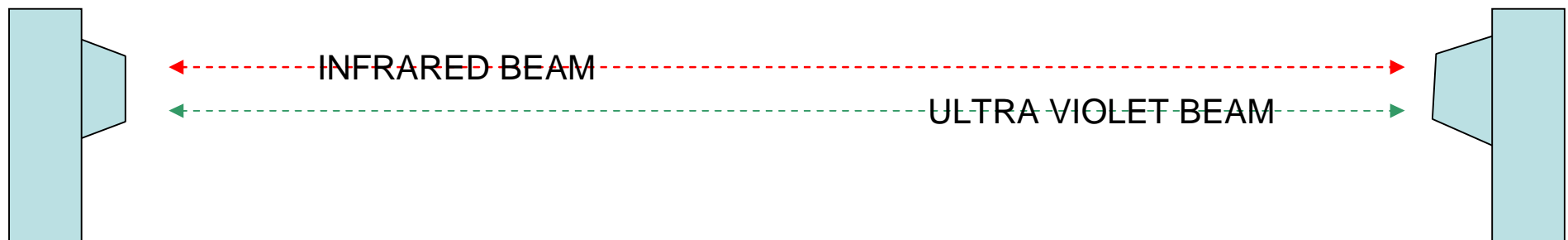


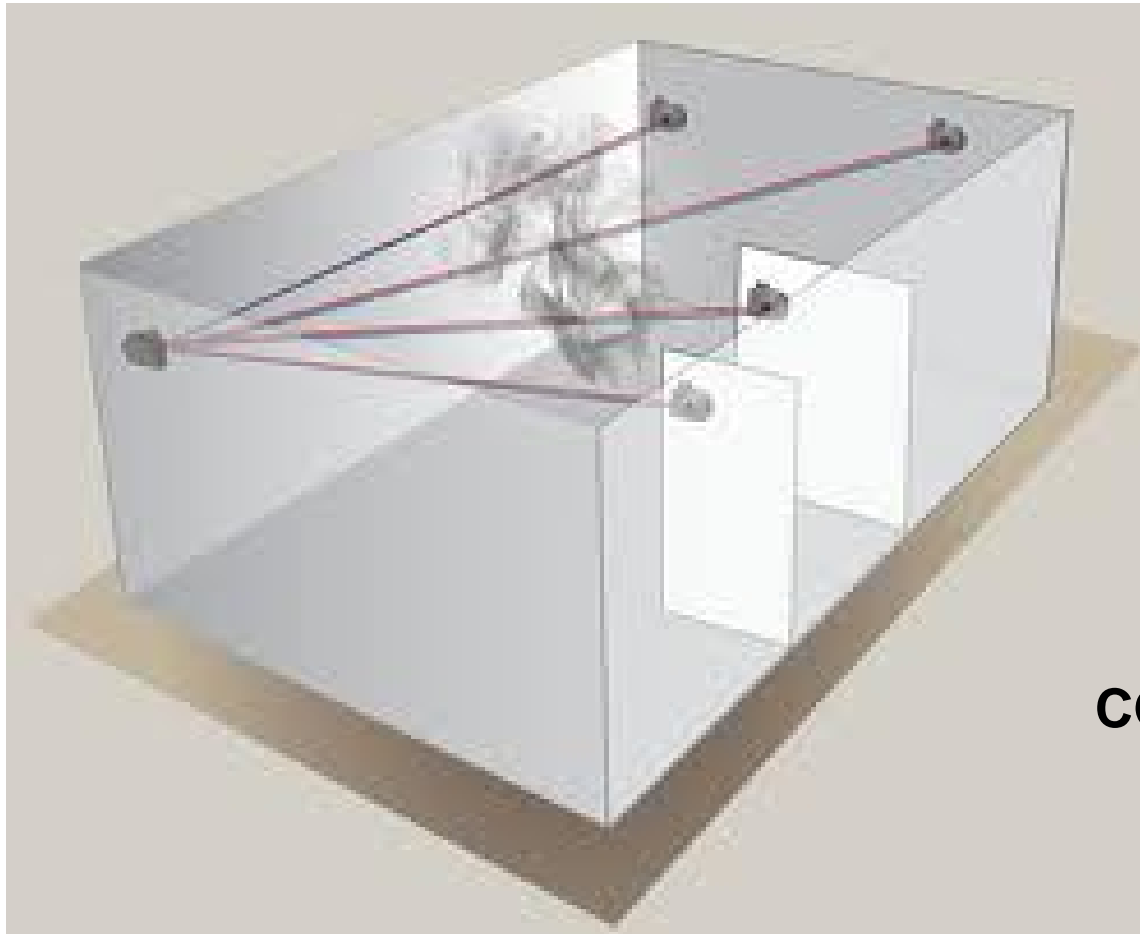
Open-area Smoke Imaging **Detection** (OSID)

Advanced beam detector category



OSID is cost-effective smoke detection for large, open spaces requiring standard sensitivity detection. In its simplest configuration, OSID uses one imager, a camera-like device with a wide field of view, and a wired or battery-powered emitter roughly aligned on the opposite wall within the protected area. The emitter sends both infrared and ultraviolet coded light signals to the imager. If the light reception is altered due to the presence of genuine smoke particles, the imager will go into alarm.





**ONE IMAGER
CONNECTED TO FOUR
EMITERS**

SAMPLE INSTALLATION

OSID

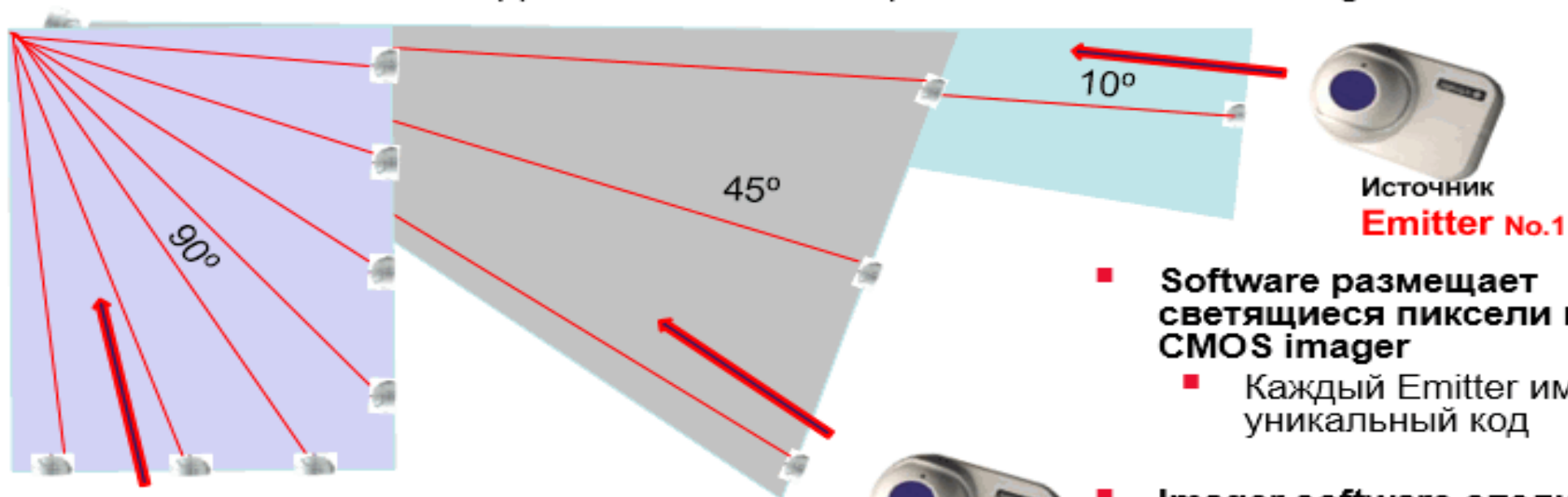
• Open Area Smoke Imaging Detection



Приемник
Imager

» **Imager** может сканировать пространство с углом раскрытия от 10° до 90°

» До **7 Emitters** может распознаваться 1-им Imager-ом



Источник
Emitter No.1

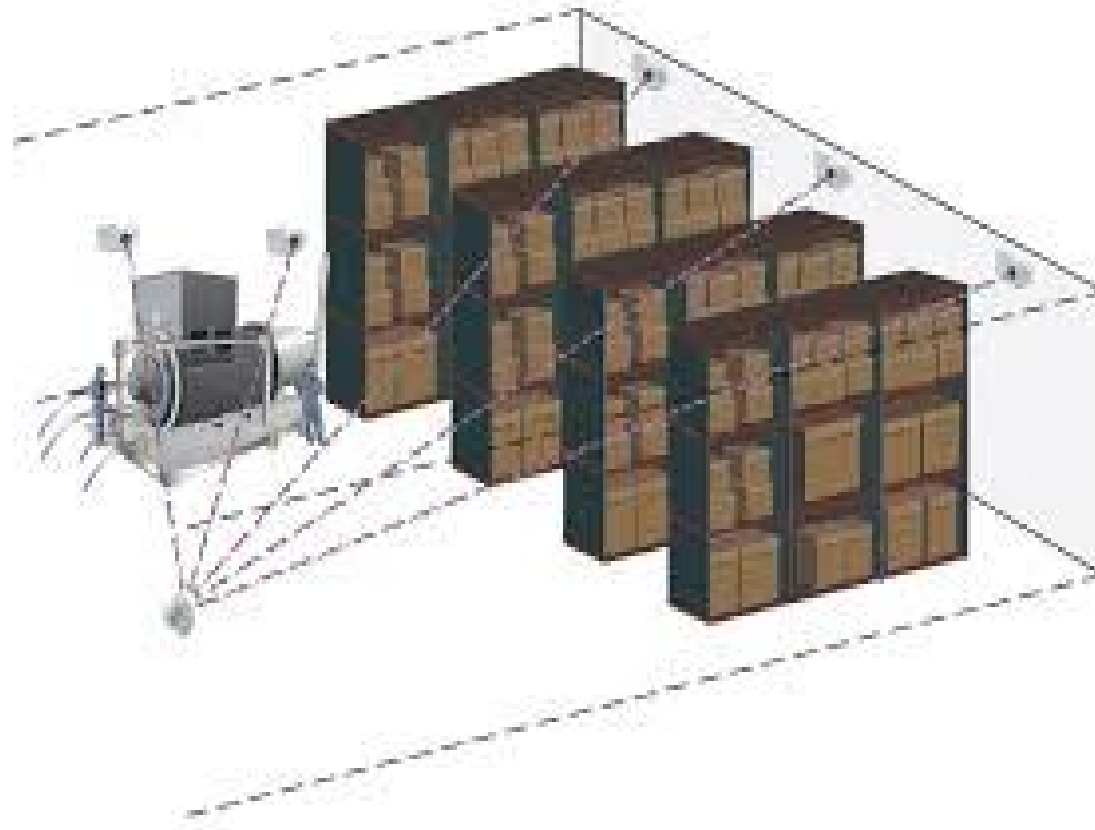
- Software размещает светящиеся пиксели на CMOS imager
 - Каждый Emitter имеет уникальный код
- Imager software следит за перемещением модулей
 - Отсутствие моторизованных устройств в лучевых извещателях.

Источник
Emitter No.7



Источник
Emitter No.6





ONE IMAGER CONNECTED TO FIVE EMITTERS